

New theory test questions

Core questions (C)

- C1** You must turn on your vehicle's headlights when you can't clearly see a person or vehicle:

100 metres away.

[Night Driving](#)

- C12** Under normal driving conditions, what rule should you use to allow a safe following distance?

The 2 second rule

[Following distance](#)

- C15** When driving at night on a road with lanes you must be able to stop in half the length of clear road you can see in front of you. True or false?

True ☐ False ☒

[Night Driving](#)

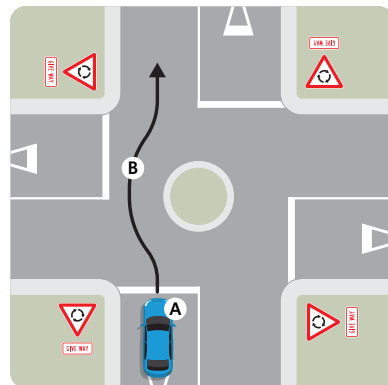
- C19** The legal definition of a road includes beaches, bridges, car parks, streets and motorways. True or false?

True ☒ False ☐

[What is a road?](#)

- C32** How must you signal when travelling straight ahead at a roundabout?

Signal left as you pass the exit before the one you wish to take



[Receiving signals](#)

- C38** When coming out of a driveway you must give way to anyone using a footpath, cycle path, shared path or the road. True or false?

True ☒ False ☐

[Giving way at intersections](#)

- C39** You're driving along a road with an 80km/h speed limit. There's a 100km/h speed limit sign ahead. When can you start to increase your speed?

When you pass the 100km/h speed limit sign

[Safe speed guidelines](#)

- C40** You're driving along a road with an 80km/h speed limit. There's a 60km/h speed limit sign ahead. When must you be going 60km/h?

At the 60km sign

[Safe speed guidelines](#)

- C41** You're driving slower than the speed limit and notice there are vehicles following you. What should you do?

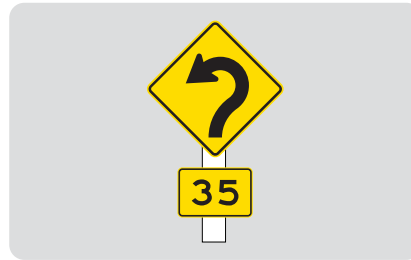
Pull over as soon as it is safe to let the following vehicles pass

[Slow drivers](#)

Signs and markings questions (S)

- S3** This sign recommends a safe speed of 35km/h for the curve in good driving conditions. True or false?

True ☒ False ☐



[Curve warning signs](#)

- S21** What must you do at a give way sign?

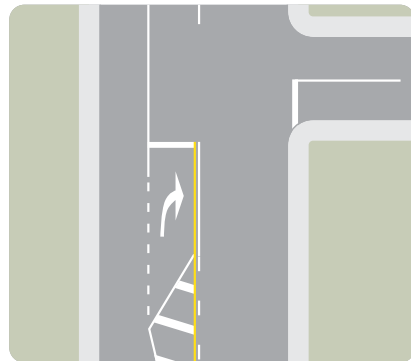
Slow down and be ready to stop



[Give way sign](#)

- S26** Can you use a right-turn bay to overtake a vehicle travelling straight ahead?

Yes ☐ No ☒



[Making a right turn from a left-hand bay](#)

- S39** What does this sign mean?

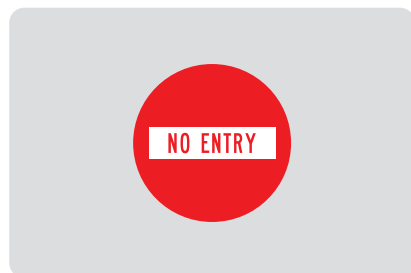
You must not turn left



[Compulsory signs](#)

- S40** What does this sign mean?

You must not drive into this road



[Compulsory signs](#)

S41 What does this sign mean?

Bus lane that can also be used by cycles, motorcycles, Mopeds



[Compulsory signs](#)

S42 What does this sign mean?

Bus lane that can only be used by buses



[Compulsory signs](#)

S43 You're driving along a beach where this sign is displayed. There are people on the beach up ahead. What is the speed limit?

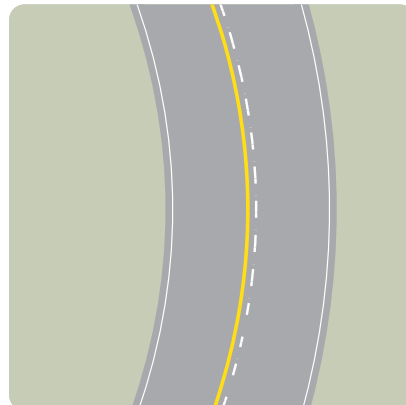
30km/hr



[Beach and river variable speed limit signs](#)

S44 What does a solid yellow line on your side of the centre line mean?

You must not pass a motor vehicle or animal-drawn vehicle if it means you have to cross over a no-passing line on your side of the centre line



[Yellow centre line](#)

S45 What does this marking painted on the roadway mean?

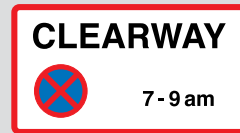
Shows where riders are likely to ride in the centre of the lane for safety. You should slow down and follow the riders until the road widens and you can pass safely, or use another lane to pass them



[Passing a cyclist](#)

S46 What does this sign mean?

You must not stop here between
the times shown on the sign



[Parking signs](#)

S47 You are coming up to some roadworks and see a roadworker holding out this sign. What must you do?

Stop before reaching the sign

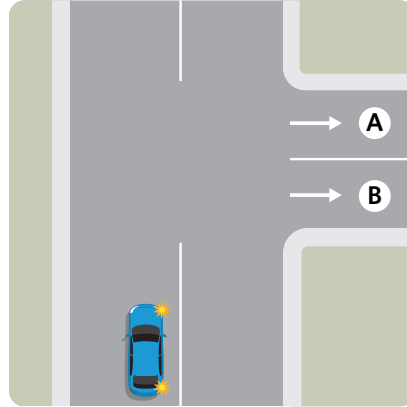


[Roadworks](#)

Road position questions (RP)

RP2 You are turning right. Which lane must you turn into?

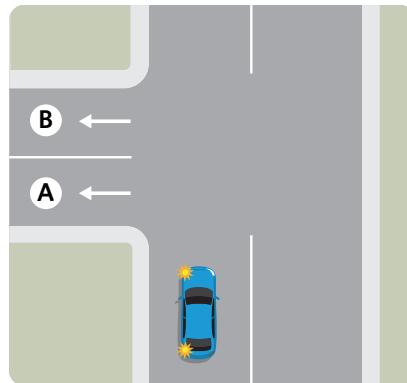
B



[Using lanes correctly](#)

RP7 You are turning left. Which lane must you turn into?

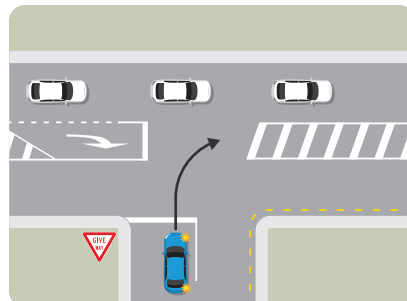
A



[Using lanes correctly](#)

RP8 You are driving the blue car and want to turn right. Can you use the flush median and wait for a safe gap in the traffic?

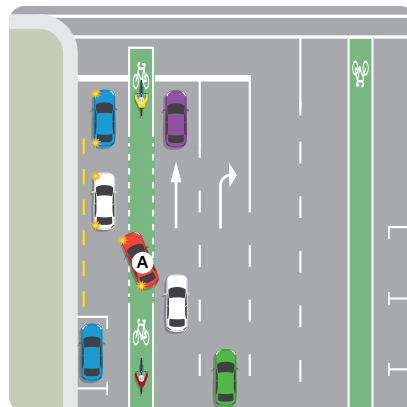
Yes



[Turning on or off a road with a flush median](#)

RP9 There's a row of cars waiting to turn left. Can car A stop on the cycle lane while waiting to turn left?

No



[Cycle only lanes](#)

Behaviour questions (B)

B6 When passing a cyclist, how much room should you allow?

At least 1.5m

[Responsible driving](#)

B15 Can you use a hand-held cellphone for calls while driving?

No

[Responsible driving - cellphones](#)

B17 Alcohol can seriously affect your driving. It can slow your reaction times and affect your senses. True or false?

True ☒ False ☐

[Alcohol and drug limits](#)

B38 Drugs, including drugs prescribed by your doctor, may affect your driving. They can slow your reaction times and affect your senses. True or false?

True ☒ False ☐

[Alcohol and drug limits](#)

B39 Are you allowed to make a U-turn on a motorway?

No

[Making a U-turn](#)

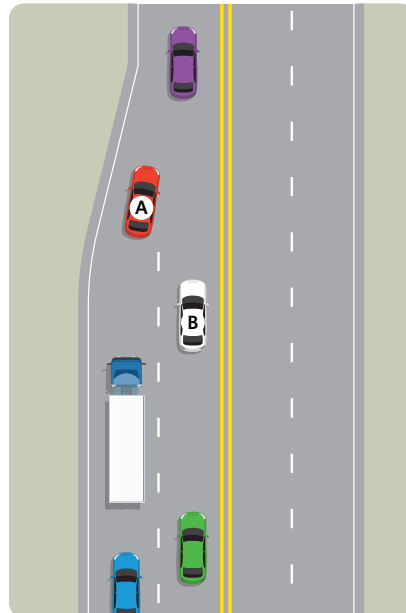
B40 Can you use a hand-held cellphone when driving to create, send or read a message?

No

[Responsible driving - cellphones](#)

B41 What is the best way to merge when 2 lanes are merging into one lane?

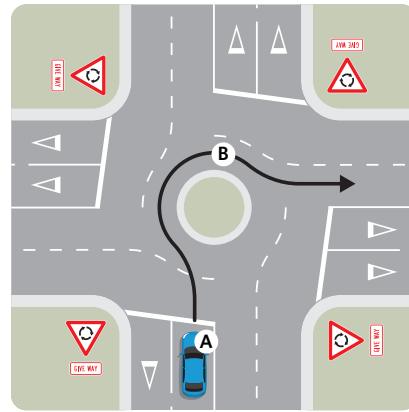
As you merge, let one vehicle from the other lane go first, and then go



[Merging](#)

B42 How must you signal when turning right at a roundabout?

Signal right as you come up to the roundabout and signal left as you pass the exit before the one you wish to take

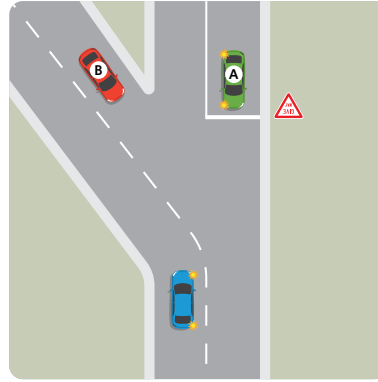


[Signal use at roundabouts](#)

Intersection questions (I)

- I30** You are the driver of the blue car.
Who must you give way to?

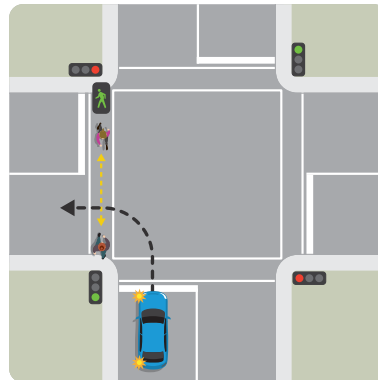
Vehicle B



[The give way rules](#)

- I35** Does the blue car have to give way?

Yes



[Traffic signals](#)

- I36** You are the driver of the blue car.
Who must you give way to?

Vehicle C



[The give way rules](#)

- I37** You are the driver of the blue car.
Who must you give way to?

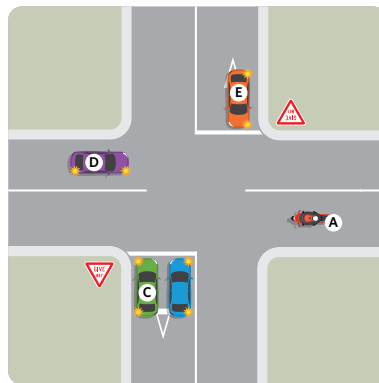
Vehicles D and C



[The give way rules](#)

- I38** You are the driver of the blue car.
Who must you give way to?

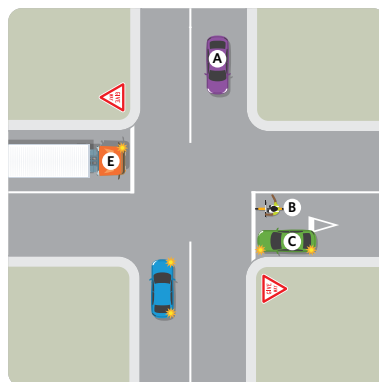
Vehicles A, D and E



[The give way rules](#)

- I39** You are the driver of the blue car.
Who must you give way to?

Vehicle A



[The give way rules](#)

- I40** You are the driver of the blue car.
Who must you give way to?

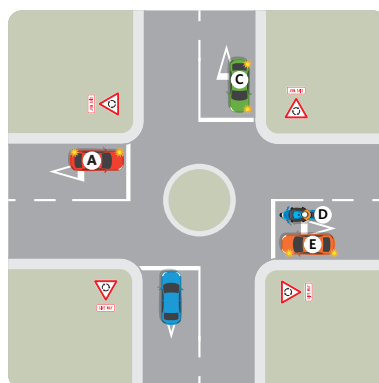
Vehicle B



[Giving way at roundabouts](#)

- I41** You are the driver of the blue car.
Who must you give way to?

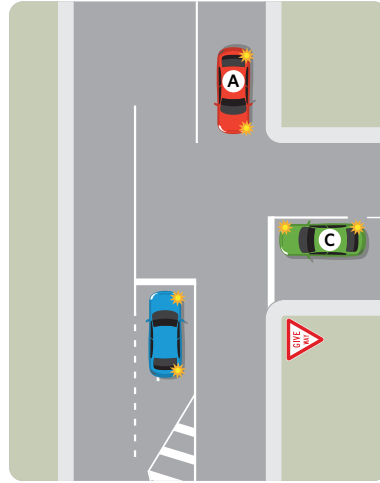
Vehicle D



[Giving way at roundabouts](#)

- I42** You are the driver of the blue car.
Who must you give way to?

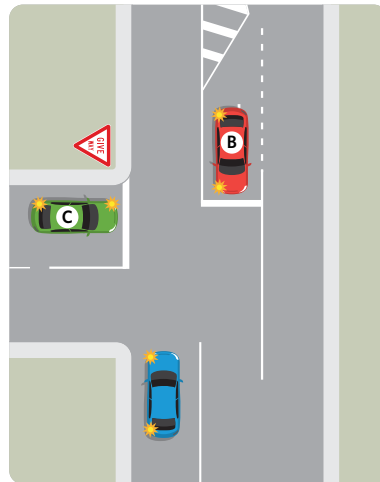
Vehicle A



[The give way rules](#)

- I43** You are the driver of the blue car.
Do you have to give way to car B?

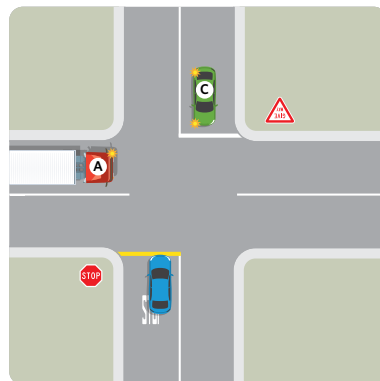
No



[The give way rules](#)

- I44** You are the driver of the blue car.
Who must you give way to?

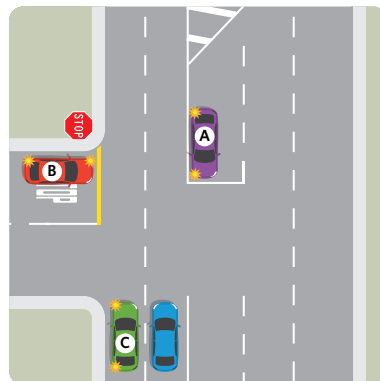
Vehicles A and C



[The give way rules](#)

- I45** You are the driver of the blue car.
Who must you give way to?

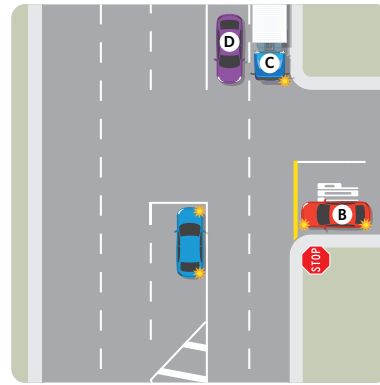
None



[The give way rules](#)

- I46** You are the driver of the blue car.
Who must you give way to?

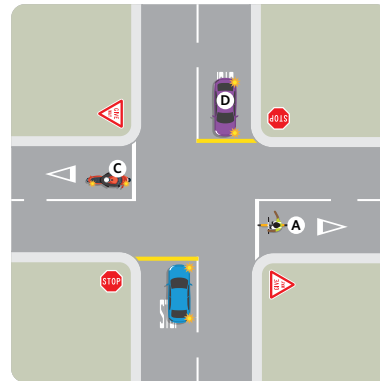
Vehicles D and C



[The give way rules](#)

- I47** You are the driver of the blue car.
Who must you give way to?

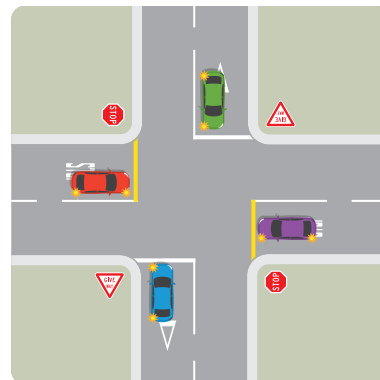
Vehicles A and D



[The give way rules](#)

- I48** You are the driver of the blue car.
Do you need to give way to?

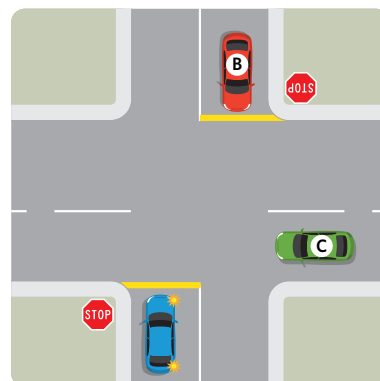
No



[The give way rules](#)

- I49** You are the driver of the blue car.
Who must you give way to?

Vehicles B and C



[The give way rules](#)

Specialist questions for car drivers

- 17 When you have a learner licence you must always have a supervisor in the vehicle with you. Where in the vehicle must the supervisor sit?

Front passenger seat.

[Learner licence conditions](#)

- 23 What should you do if your car breaks down on a motorway?

Indicate and steer your vehicle as far off the road as possible, lift up the bonnet and boot, turn on your hazard lights or use a safety triangle to warn approaching traffic, at night, turn on the inside light

[Breakdowns](#)

- 25 Where must a learner driver display L plates on a car?

On both the front and rear of the vehicle



[L plates](#)